



KRAL Volumeter OMP.

The new standard in fuel consumption measurement.

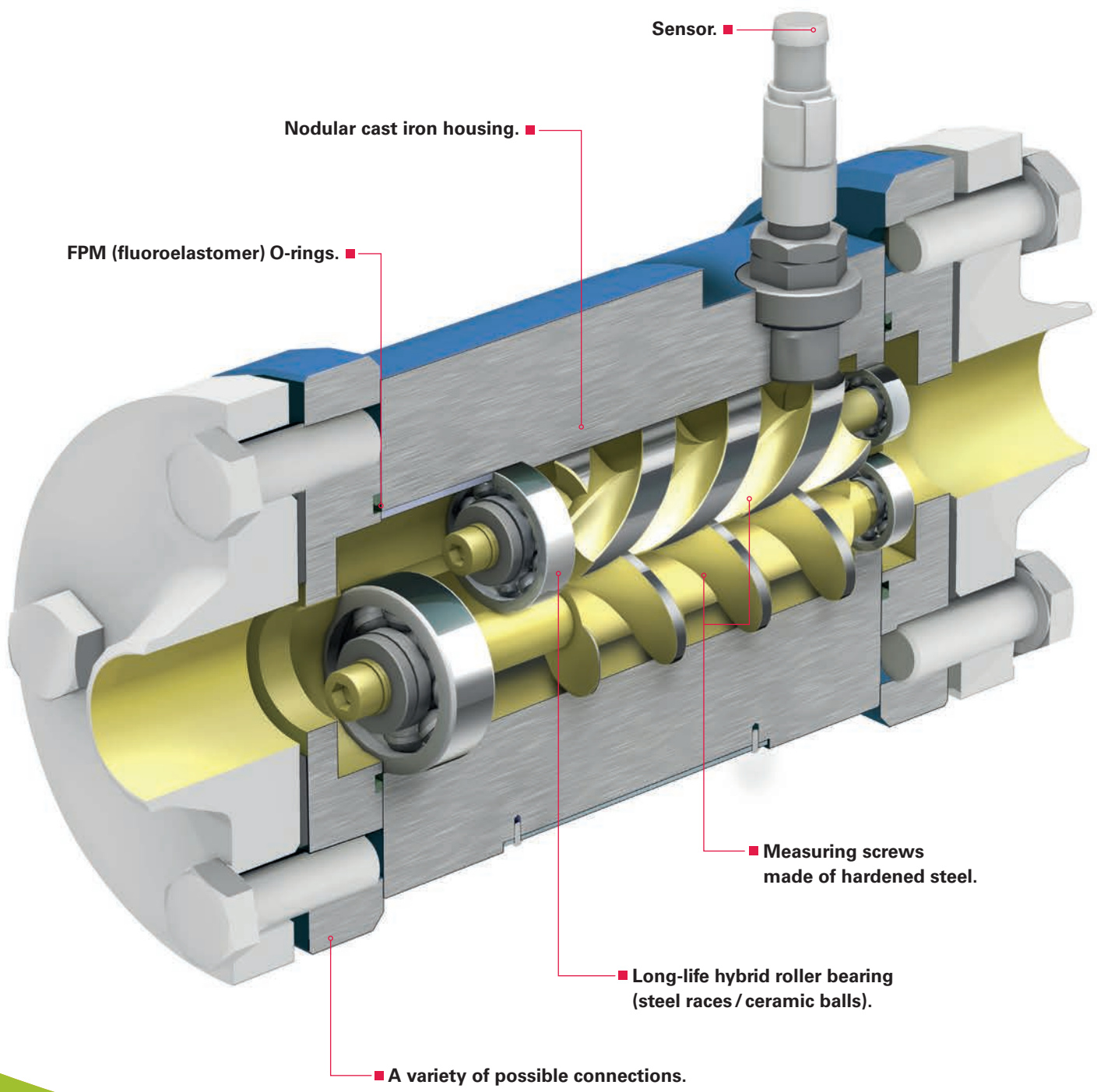


**AUSTRIA IS GREEN.
KRAL THINKS GREEN.**

**WE RESPECT THE NATURAL ENVIRONMENT
IN WHICH WE WORK AND LIVE.**

**OUR FLOWMETERS HELP
OUR CUSTOMERS TO SAVE FUEL.**

Flow Measurement



Clear Advantages.

The new OMP is made to measure fuel consumption.



Highly accurate.

The precision measurement chamber makes extremely accurate measurements to 0.1% possible. The turn-down ratio is 150:1.

Robust and precise.

The solid casing protects the precisely manufactured spindles – the OMP offers both robustness and precision.

Fast response measurement.

The fast response spindles track any fluctuations in flow. Every drop counts.

No flow conditioning.

Upstream or downstream flow conditioners are not required. Pipe elbows and T-pieces do not influence measurement accuracy.

Minimal pressure loss.

Because of the high quality roller bearings, friction and pressure loss are low.

OEM.

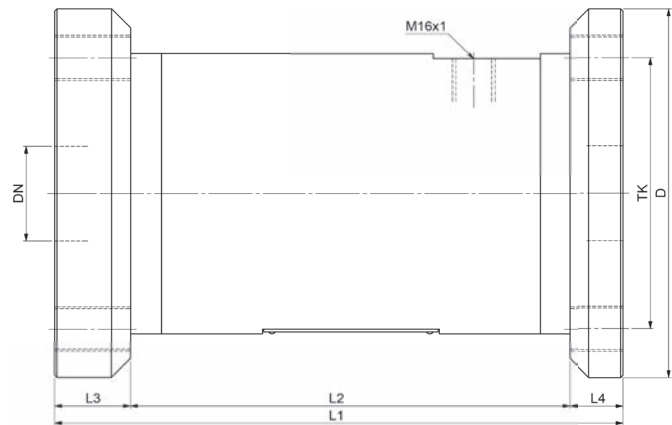
OEM pricing is available.

- Customized for fuel consumption measurement applications, including diesel engine, booster module and burner/boiler.
- Flow range from 0.08 to 135 gpm.
- Max. operating temperature 257 °F.
- Max. design pressure 600 psi.
- Accuracy of $\pm 0.1\%$.
- PNP or NAMUR output.
- Standard with hybrid bearings – robust and long life.

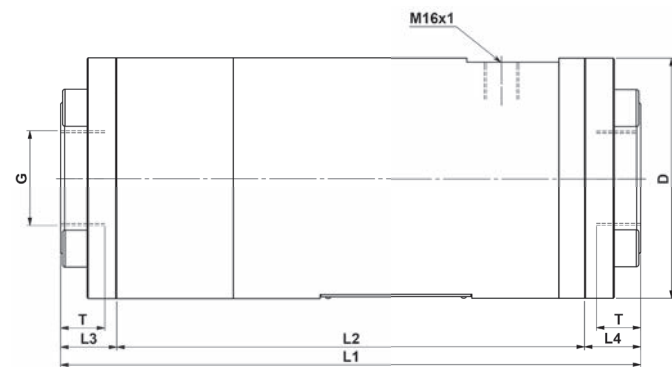
Dimension Information.

Threaded and flanged flowmeter connections.

ANSI dimensions.		OMP 20	OMP 32	OMP 52
DN	[in]	3/4	1	1 1/2
Class		300	300	300
D	[in]	4.63	4.87	6.13
TK (bolt circle)	[in]	3.25	3.50	4.50
L1	[in]	5.28	7.68	9.65
L2	[in]	3.35	5.51	7.30
L3	[in]	0.96	1.08	1.26
L4	[in]	0.96	1.08	1.08
Weight	[lbs]	13.2	27.5	43.2



BSPP dimensions.		OMP 20	OMP 32	OMP 52
DN	[in]	3/4	1	1 1/2
Pressure rating	[psi]	600	600	600
D	[in]	2.91	4.09	4.65
T	[in]	0.63	0.71	0.87
L1	[in]	5.71	8.46	11.20
L2	[in]	3.35	5.51	9.04
L3	[in]	1.50	1.85	1.08
L4	[in]	0.87	1.10	1.08
Weight	[lbs]	7.7	24.2	39.7



Every KRAL Volumeter® is calibrated and tested at the factory.

Two types of calibration are available. A KRAL standard factory calibration or alternatively a calibration which is in compliance with the internationally recognized and used standard ISO/IEC 17025.

Technical Data.

The size to fit your application.

OMP Series.		OMP 20	OMP 32	OMP 52
Flow				
Q_{max}	gpm	12	40	135
Q_{nom}	gpm	8	27	90
Q_{min}	gpm	0.08	0.27	0.9
Pressure				
P_{max}	psi	600	600	600
Temperature				
t_{min} to t_{max}	°F	-4 to +257	-4 to +257	-4 to +257
Viscosity				
v_{min} to v_{max}	cSt	1 to 1x10 ⁶	1 to 1x10 ⁶	1 to 1x10 ⁶
K-factor				
K	pulses/gal	1,215	295	67
Frequency				
f to Q_{nom}	Hz	161	130	104



One Source.

KRAL electronics for flowmeter units.

KRAL BEM electronics.

Users of conventional universal display units often cannot make use of all of a device's options. There is likewise sometimes a lack of functionality that can be important in unique applications.

Enjoy improved performance when using KRAL electronic units in combination with KRAL Volumeter.

The high quality electronic components and evaluation algorithms used result in precisely measured flow values that are presented via the display as well as through signal outputs.



